

Since 1905

**Alsip's**

Building Products & Services

HEARTH SIDE

FIREPLACE & STONE GALLERY



# Exterior Catalogue

---

## 2025



[www.alsips.com](http://www.alsips.com)

[www.hearthsidefireplaces.ca](http://www.hearthsidefireplaces.ca)



**CORONADO**<sup>®</sup>  
STONE PRODUCTS



**Osage Stone - Cape Cod Grey**



**Osage Stone - Alamo Sands**



**White - Pro Ledge**



**Huron - Pro Ledge**



**White - 3" Split Limestone**

**Manufactured Stone Veneer**



**CORONADO**<sup>®</sup>  
STONE PRODUCTS

QUOTE



**Huron - Honey Ledge**

QUOTE



**Rocky Mountain - Honey Ledge**

QUOTE



**Black Forest - Belgian Castle**

QUOTE



**Glacier - Honey Ledge**

QUOTE



**Northland - Sawtooth Ledge**

QUOTE



**Birch Grove - Sawtooth Ledge**

**Manufactured Stone Veneer**



**Onyx - Rustic Quickfit**



**Avalanche - Rustic Quickfit**



**Arctic - Rustic Quickfit**



**Athabasca - Mountain Quickfit**



**Polar - Hackett Stone**



**Fernie - Hackett Stone**

**Manufactured Stone Veneer**



**Briarwood - Ledge Stone**



**Silverhorn - Desert Stone**



**Brick - Alpine**



**Brick - Old London**



*"Protect Your Investment" - Ask us for a quote!*

Freeze-thaw cycles in Manitoba and prolonged exposure to precipitation, can cause efflorescence and mineral staining on stone. Sealing helps protect against these and other problems like mold, acid rain, discolouration, and deterioration from water exposure. These issues are not covered under warranty.

## Manufactured Stone Veneer

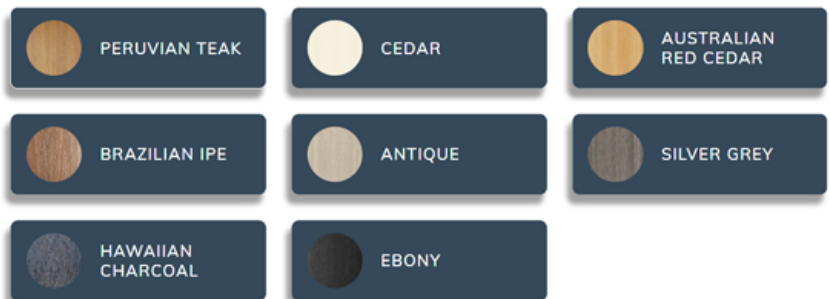
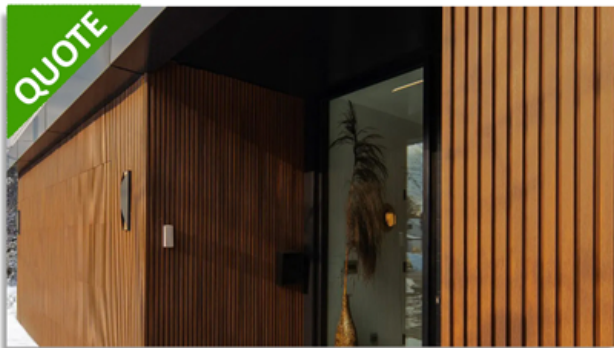


# The look of wood without the maintenance

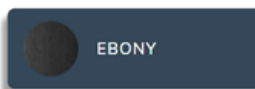
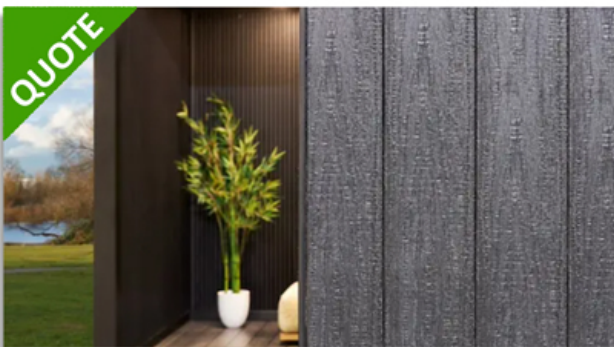
## Shiplap Board | Gapped Board | 12' + 16' Lengths



## Norwegian Fluted | Belgian Fluted | 12' + 16' Lengths



## Shou Sugi Ban Burnt Board | 12' + 16' Lengths



Matchings Trims and Accessories Available



LEED & EPD Certifications

# Composite Wood Siding



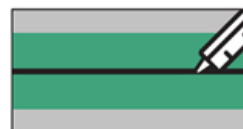
Mountaineer | Classic | Cable Tie (12" x 72" | 24" x 72" | 36" x 72")



Bespoke Fluted | Board Form | Volcanic (Various Sizes)



Matchings Caulking and Fasteners



Lightweight Concrete Panels